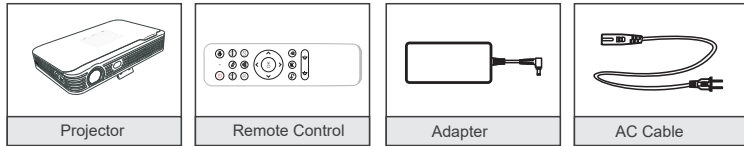


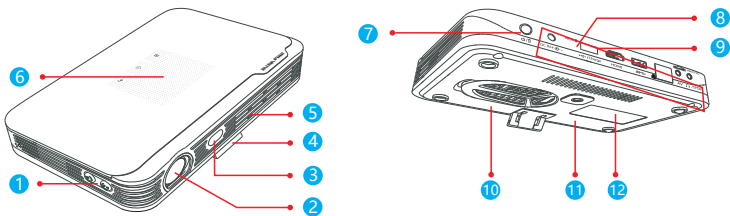
DS 9 4K User Manual Battery Wireless Projector

PACKING LIST



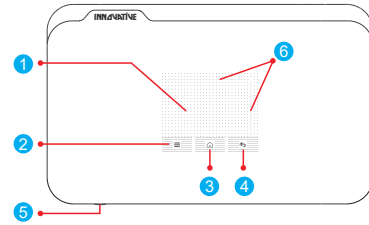
Note: Some accessories are different due to different models.

PRODUCT OVERVIEW



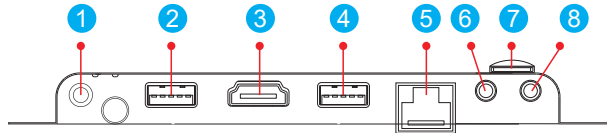
- 1 Electric Focus Button
- 2 Lens
- 3 Standard model: IR sensor ;
Ultimate model: Auto Focus lens
Note: Can't use the remote control
to power on when the projector is
in battery working mode.
- 4 Kickstand
- 5 Air out
- 6 Touch panel
- 7 Power button(a, long press on the power button > 2
seconds, the projector start working; b, short press < 1
second to turn on the USB 5V output mode when the
projector is standby in battery mode,
- 8 Reset
- 9 External interface
- 10 Air in
- 11 Triangle bracket
- 12 Speaker

CONTROL PANEL



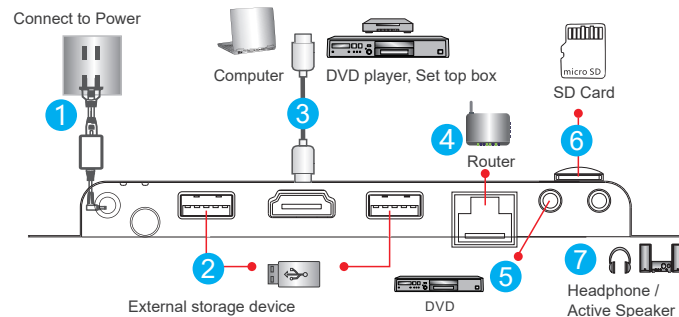
- 1 By sliding and clicking on the touch panel, you
can control the cursor and enter any selected
items.
- 2 Menu: While in the video play interface or in
HDMI, AV input source.
- 3 Home: A shortcut for the main interface.
- 4 Return: Back to the last interface or exit the
application.
- 5 Indicator Light: Red means charging, Purple means charging finished, Blue means working in battery
mode.
- 6 Scroll bar: If the display content is beyond the page range, use the horizontal and vertical scroll bars
to adjust.

INPUT/OUTPUT



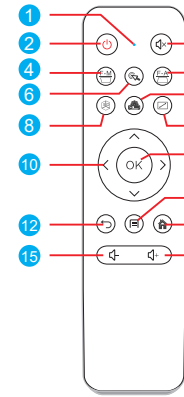
- 1 Power input (Please use the AC adapter that comes with your projector only)
- 2 USB input 1
- 3 HDMI port
- 4 USB input 2
- 5 Ethernet port
- 6 AV in
- 7 SD Card Slot
- 8 Headphone & S/PDIF output port

DEVICE CONNECTION



- 1 For AC adapter that comes with your projector
- 2 For USB devices, such as U disk, mouse etc.
- 3 For high-definition signals from external DVD or laptop devices
- 4 For network devices such as router
- 5 For video devices such as external DVD
- 6 For reading contents of Micro SD card devices
- 7 For Audio output of headphones or audio equipment, meanwhile for multiplexing S/PDIF
digital audio output for connection to digital audio decoding boxes or amplifiers with digital
decoding

REMOTE CONTROL ILLUSTRATION



- 1 Indicator Light (Indication for Remote control pairing, button operation)
- 2 Power
- 3 Mute
- 4 Focus -
- 5 Focus +
- 6 Cursor
- 7 Device Setting (Includes settings of image quality, volume etc.)
- 8 3D (Only for 3D videos)
- 9 Aspect Ratio
- 10 Up Down Left Right
- 11 OK
- 12 Return
- 13 Menu (Adjust the setting menu when playing local or online
videos)
- 14 Home
- 15 Volume -
- 16 Volume+

Remote Control Instructions :

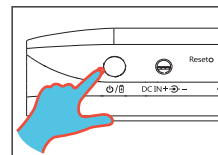
Keep the remote control closed to the projector within 20cm, and press the "Volume +" and "Volume -" to make pairing, release
remote when the indicator light starts to flash slowly . If the indicator flashes quickly 3 times and then turns off, the pairing
succeeds. If the indicator flashes quickly for 30 seconds and then goes off, the pairing fails. Please repeat above steps.

Notice: Picture of Remote Control is for reference only!



**SAFETY INSTRUCTION: The projector built-in battery, do not use in high
temperature and high humidity conditions. Product sit idle for a long time, ensure
that three month a charge!**

POWERING ON/OFF



Power on:

1. Ensure the AC adapter is connected with your projector (Please use
the standard AC adapter), the red indicator will be on.
- 2.1. Press " " on projector > 2 seconds to turn it on; If charging, the
indicator light is red . If the charging is completed, the indicator light is
purple.
- 2.2. When the projector is standby, short press the projector " " to turn
on the USB 5V output mode, the blue indicator light flash.

Power off :

1. Press " " on the projector or on the remote control to power off the projector.

1.1 Dialog will appear by pressing the " " on the projector, users can make choices using projector
panel or " ^ " and " v " on the remote control and then click on the panel or press " OK " again to
confirm it..

1.2 When you choose Power off and press " " again, the projector will be turn off, and its cooling
system will be shut down at the same time.

2. Unplug AC adapter of the projector.

Warning indicator: When the warning indicator (as follows) lights up, the projector will power off
automatically ;

> " Abnormal temperature ", indicator light turns to red and in a slow flash, meaning that the projector is
overheated. Please check whether the air filter is clogged and clean it in time.

> " Abnormal fan ", indicator light turns to red and blinking rapidly meaning that the fan is working
abnormally.

NOTICE



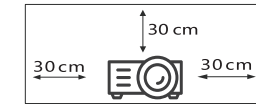
1. When using the projector, please do
not watch the lens directly to avoid
damage to the eyes.



2. Please do not use in hot and
humid environment.



3. Please do not block the air
outlet or air inlet.



4. Install away from the wall In order to
maintain the performance and feasibility
of the projector, please leave at least
30cm between the projector and the wall.

Warning:

- * Block the projector Vented slits and openings.
- * Wipe the device with a scrub, paraffin or solvent.
- * Used under the following conditions :
 - Extremely hot, cold or humid environment
 - Ensure indoor temperature is between 5-40°C
 - Relative humidity is 80% maximum at 5-40°C, no condensation
 - Areas susceptible to large amounts of dust and dirt
 - Near any equipment that produce strong magnetic field
 - Sunlight exposure directly

The color, appearance and specifications of this product are subject to the actual product and may
change without notice due to performance improvement.

POWERING ON/OFF